



Groups, Fund Raisers & Private Functions

Glenbrook Cinema
2 Ross Street, Glenbrook, NSW 2773
enquiries@glenbrookcinema.com.au
(02) 4739 0003

All pricing includes GST.

Document Last Updated 9th August 2024 – Pricing valid to 31st December 2024.

Glenbrook Cinema



1. Private Screening

- a. Private Screening* - from \$960+

2. Public Sessions

- a. Group Booking of 30+ - from \$360
- b. Exclusivity - Front Half of Cinema - \$825
- c. Exclusivity - Rear Half of Cinema - \$900
- d. Exclusivity - Full Cinema - \$1,760



3. Own Product

- a. Private Screening* - \$880
- b. Public Screening* - \$990

4. Extras

- a. Food & Beverage Options
- b. Additional Options

* Available at select non-peak times only

About Glenbrook Cinema

- Single Screen Cinema
- 12 Rows / 160 seats
- Rear section has 75 seats (6 rows)
Front section has 75 seats (5 rows)
F row has 10 seats
- 2 Wheelchair Spaces located in F row
- Audio hearing loop
- Full Service Candy Bar
- Adjacent Hall (Optional Hire)
- **Please Note:**
For new release titles Glenbrook Cinema is contractually required by movie studios to screen a minimum number of sessions each week. This significantly limits availability for private functions and events for titles which are not playing in-season at Glenbrook Cinema.

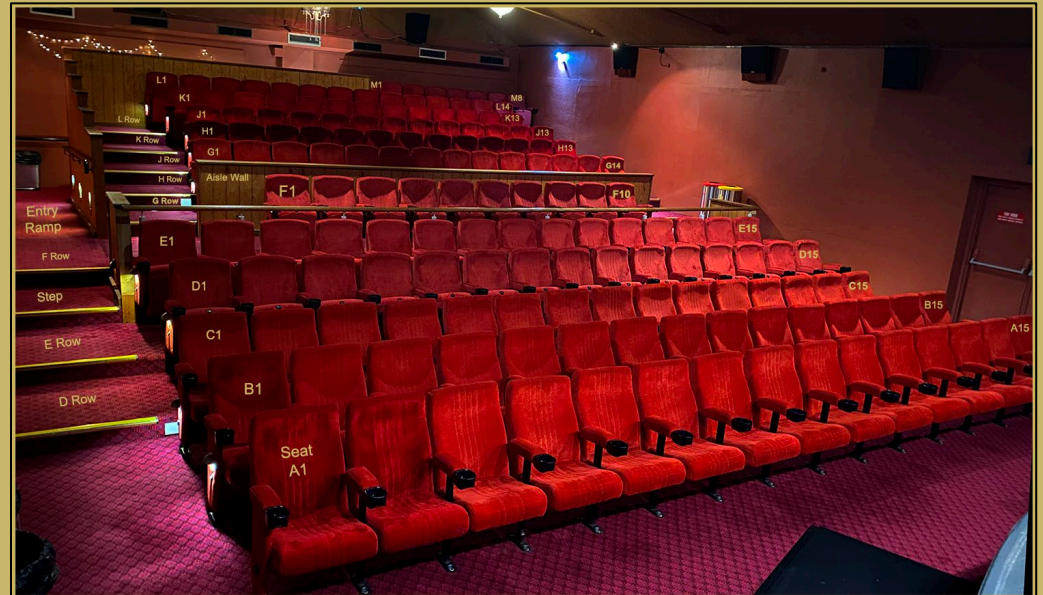
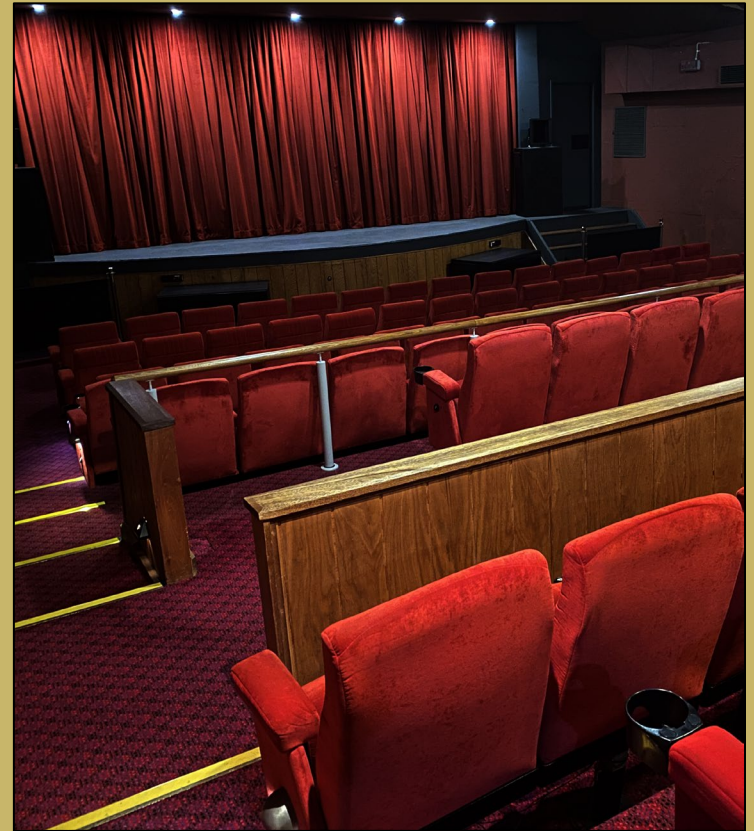


Photo taken from front corner of stage.

1. Private Screening

a). Private Screening - from \$960+

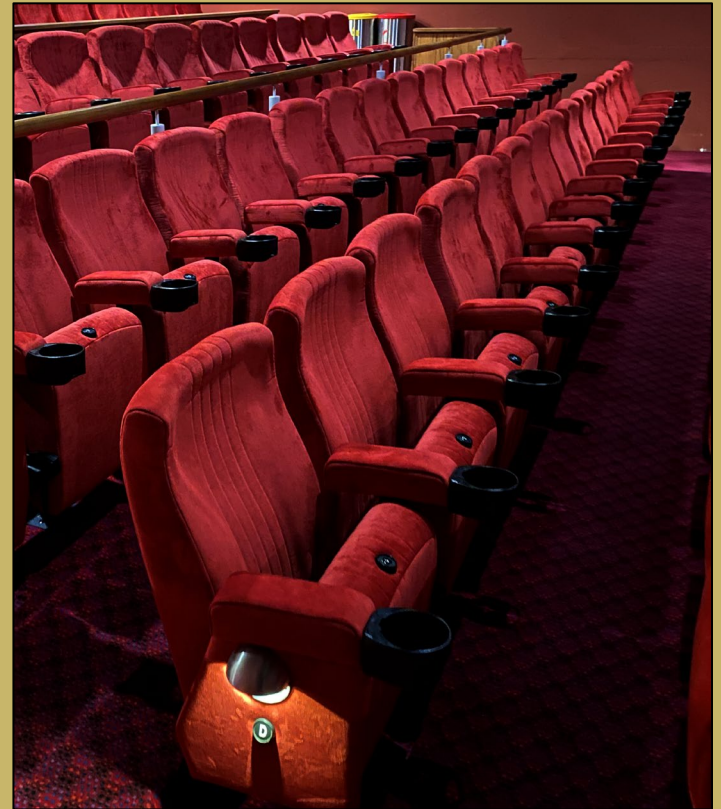
- **Movie Selection:** Choose from either a current in-season movie screening at Glenbrook Cinema or a back catalogue title available from the various movie studios.
- Private function screenings must be arranged at least one month in advance at select non-peak available times.
- Ideal for **School Groups, Fund Raising Events, Special Corporate Events.**
- Your private event is closed to the general public and will not be included in our advertised program. Your event is subject to available space within Glenbrook Cinema's weekly program and approval from your selected movie's distributor.
- Group Ticket Price = **\$12 per person**
- **Deposit Payable** on booking confirmation = \$440
- Minimum purchase of 80 tickets required.
- As required by the film studios' distribution policy, every attendee must have a ticket.
- Total Payable: Organizer pays Glenbrook Cinema **whichever is greater** being the total of \$12 per guest or a minimum guarantee of **\$960.**



2. Public Sessions

a). Group Booking of 30+ - from \$360

- You can book in advance for groups of 30 or more at any of our public sessions to receive a discounted ticket price of **\$12 per person**.
- Perfect for social groups, clubs or other small to medium sized groups.
- Seating is reserved for you and your guests, and you will be sharing the cinema with the general public.
- Group bookings are available at any session.
- Tickets must be paid for in one single transaction.
- Minimum number of guests 30 people.



2. Public Sessions

b). Exclusivity - **Front Half of Cinema** - \$825

- Whether you want space or just wish to arrange a group outing at any one of our upcoming advertised **PUBLIC SESSIONS**, Glenbrook Cinema gives you the opportunity to reserve exclusively the entire front half of the cinema.
- The front half of the cinema is located in front of the rail of the accessibility row. The front half includes A row, B row, C row, D row and E row and has a total of 75 seats.
- Half cinema bookings must be arranged at least 7 days in advance prior to tickets going on sale to the general public.
- Bookings less than 7 days in advance may be available if no seats have yet been booked by the general public.
- Full payment is required 3 days in advance to secure your booking.
- Maximum people 75.
- Single Flat Fee = **\$825**



2. Public Sessions

c. Exclusivity - Rear Half of Cinema - \$900

- Whether you want space or just wish to arrange a group outing at any one of our upcoming advertised **PUBLIC SESSIONS**, Glenbrook Cinema gives you the opportunity to reserve exclusively the entire back half of the cinema.
- The back half of the cinema behind the aisle wall includes G row, H row, J row, K row, L row and M row and has a total of 75 seats.
- Half cinema bookings must be arranged at least 7 days in advance prior to tickets going on sale to the general public.
- Bookings less than 7 days in advance may be available if no seats have yet been booked by the general public.
- Full payment is required 3 days in advance to secure your booking.
- Maximum people 75.
- Single Flat Fee = **\$900**



2. Public Sessions

d). Exclusivity - **Full Cinema** - \$1,760

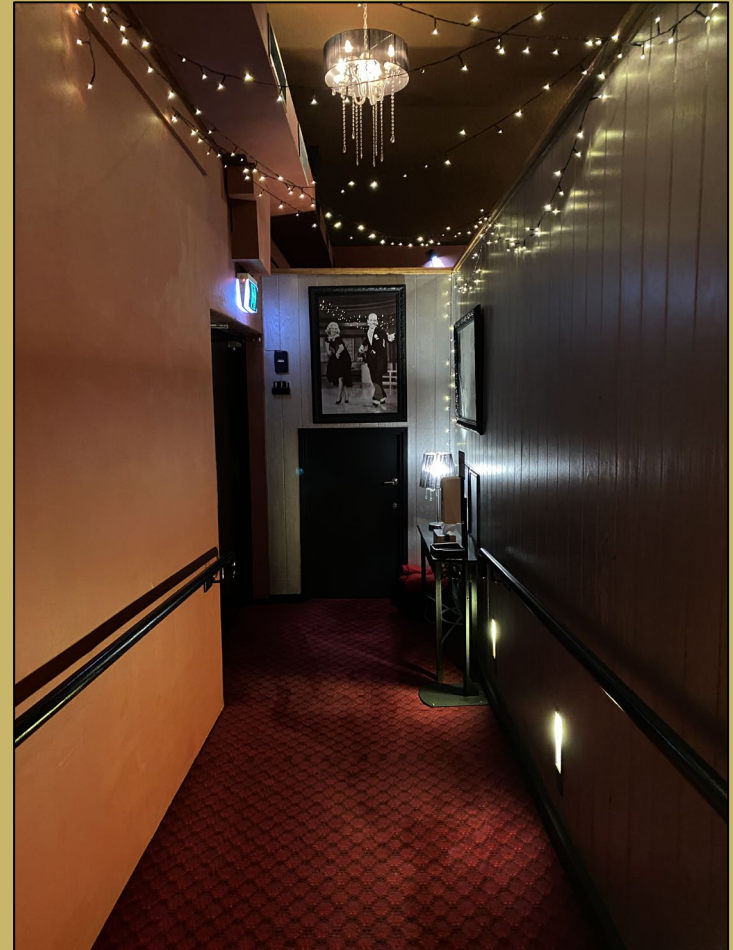
- Whether you want space or just wish to arrange an exclusive screening for you and your friends at any one of our **upcoming advertised sessions**, Glenbrook Cinema gives you the opportunity to reserve exclusively the entire cinema.
- The session will be exclusively yours – Marked as **Sold Out** to the general public.
- This includes all 160 seats plus the 2 wheelchair spaces. Cinema seating capacity cannot be exceeded.
- Full cinema bookings must be arranged at least 7 days in advance prior to tickets going on sale to the general public.
- Bookings less than 7 days in advance may be available if no seats have yet been booked by the general public.
- Full payment is required 3 days in advance to secure your booking.
- Maximum people 160 + 2 wheelchairs.
- Single Flat Fee = **\$1,760**



3. Own Product

a). Private Screening - \$880

- **Own Product:** The event organizer is responsible for supplying an independent movie or video (in DCP format) with approved copyright, film hire and associated licence fees covered by the organiser.
- Private function screenings must be arranged at least one month in advance at select non-peak available times.
- Your private event is closed to the general public.
- Your event is subject to available space within Glenbrook Cinema's weekly program.
- **Deposit Payable** 7 days in advance = \$440
- Organiser is responsible for ticket sales.
- DCP movie / video testing and program setup required in advance.
- Maximum number of guests 160 (cinema capacity).
- Time allocation 2.5 hours.
- **Total Payable:**
Organizer pays Glenbrook Cinema a set fee of **\$880** for the screening.



3. Own Product

b). Public Screening - \$990

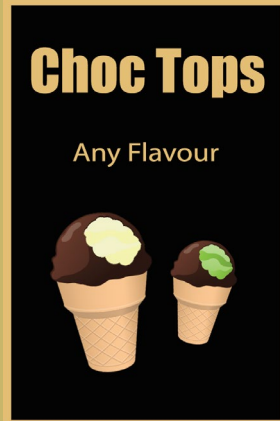
- **Own Product:** The event organizer is responsible for supplying an independent movie or video (in DCP format) with approved copyright, film hire and associated licence fees covered by the organiser.
- Event must be organized at least one month in advance.
- Tickets are sold by Glenbrook Cinema (**inclusive of GST**). Session is included within Glenbrook Cinema's advertised program.
- Your event is subject to available space within Glenbrook Cinema's weekly program.
- Organiser sets ticket price.
- **Deposit Payable** 7 days in advance = \$440
- No minimum number required.
- DCP movie / video testing and program setup required in advance.
- Time allocation 2.5 hours.
- **Total Payable:**
Organizer pays Glenbrook Cinema a set fee of **\$990** for the screening.

If total ticket sales does not cover the set fee, the organiser agrees to pay the balance to meet the total of \$990. If ticket sales exceed \$990 then Glenbrook Cinema agrees to pay any amount received over \$990 to the organiser. Amount payable by cinema will be inclusive or exclusive of GST subject to organizer's GST registration status.



4. Extras

a). Food & Beverage Options



Choc Tops

Minimum Order 30
Group Price
\$4.00 per person

Regular Price
Classic \$5.50
Gourmet Flavours \$6.50



Popcorn

Minimum Order 30
Small Popcorn
Group Price
\$3.50 per person

Regular Price
Small Popcorn \$5.80



Drinks

Minimum Order 30
Any cold drink
Soft Drink/Water/Juice
\$3.50 per person (small)
\$4.00 per person (large)

Regular Price
450ml Pepsi \$3.80
600ml Pepsi \$5.20



Alcohol

Minimum Order 30
Patrons must be age 18+
Selection of wines from
Wine-In-A-Glass or
Great Northern Beer
\$7.00 per person

Food and Beverage options must be arranged in advance. A deposit may also be required.

4. Extras

b). Additional Options



On Screen Data Presentations

Should you wish to arrange a PowerPoint or data presentation on screen projected from a separate device such as a laptop computer or an iPad this can be arranged in advance. A separate technical set-up time slot will be required in advance of your screening for testing.

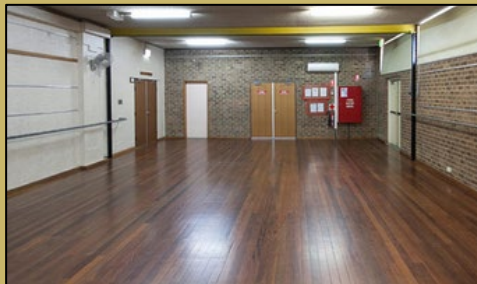
Cost = \$330



Microphones

This service requires additional PA system setup prior to screening. One corded microphone and two wireless roaming microphones can be arranged within the auditorium for your convenience. (Please note that a simple introduction may not require microphones if the presenter is comfortable projecting their voice.)

Cost = \$88



Hall Hire

The adjacent hall is a separate Blue Mountains City Council space which can be hired through the cinema (**if available**) before or after your session. The hall has a separate kitchen for catering purposes, tables, chairs and bathrooms. Low noise functions only are permitted as sound travels through to the cinema. Please Note: Alcohol is not permitted within this space.

Cost = Please Ask